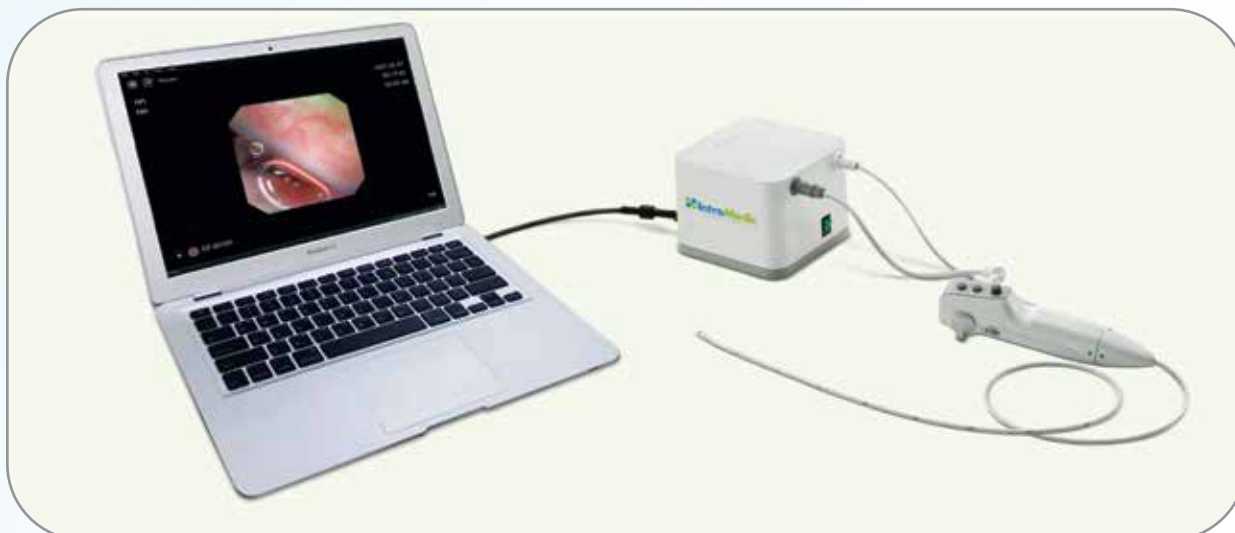


E.G.Scan™ II

E.G.Scan™ II System

E.G.Scan™ II, is an esophagoscope designed to visualize the lining of the esophagus as an adjunctive tool in the detection of abnormalities of the esophagus. Visualized images are viewed via E.G.View™, software installed on the display system for diagnosis of disease related to the esophagus.



1. Disposable

- Safe & Effective disposable scope

2. Ease of use

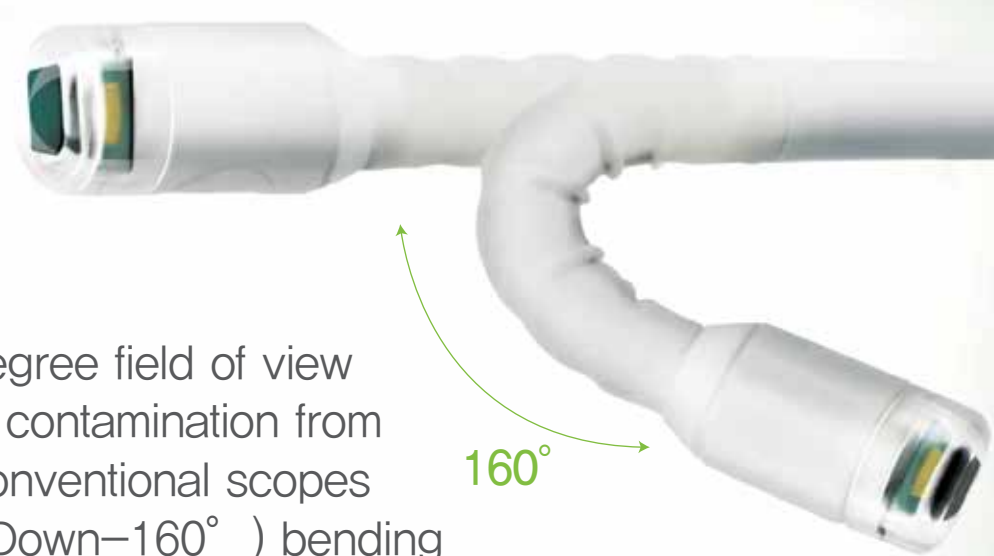
- Flexible tube material for ease of transnasal insertion
- Quick diagnostic view of the Esophagus and Stomach

3. Patient comfort

- No need for sedation

► E.G.Scan™ II Probe

- Non-invasive
- 30 frames per second
- Precision lens with 125 degree field of view
- Reduces the risk of cross contamination from cleaning and re-use of conventional scopes
- Using 2 way (Up-160° , Down-160°) bending system for better visibility



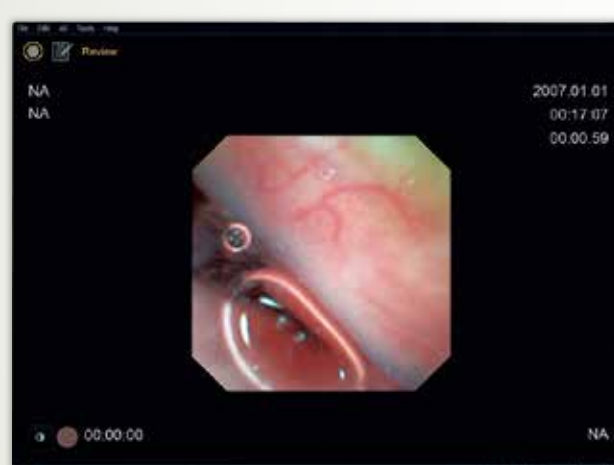
Innovation Single-Use
Endoscope

E.G.Scan™ II



► E.G.Scan™ II Controller system

- Button structure provides easy 2 way (UP-160° / Down-160°) bending
- Air channel for insufflation of the esophagus



► E.G.View™

- Easy patient management system and reporting tools
- Provides image processing technology for early diagnosis (Image Enhancement Function)
- Simple recording of procedure

Probe (EP2000)



- Optic Capsule Diameter : 6 mm
- Tube Diameter : 3.6 mm
- Air : Air Channel · Length : 1,088 mm
- Weight : 44 g
- Material : Human Compliance Plastic
- Light : 4 white LED · View Angle : 125°
- View Depth : 3~50 mm
- Bending Angle : up-160° / down-160°
- Sampling Ratio : 30 fps
- Pixel Array : 400 × 400 pixel
- Rated Power : 3.3Vdc, 100mAdc
- Operating Temperature : 0 ~ 40°C
- Storage Temperature : -10 ~ 40°C

Controller (EC2000)



- Size : 152 × 30 × 32.4 mm
- Weight : 210 g
- Rated Power : 3.3Vdc, 100mA
- Operating Temperature : 0 ~ 40°C
- Storage Temperature : -10 ~ 70°C
- Button Function : Freeze, Capture, Air

Controller (ER2000)



- Operation System : Firmware
- Communication Power : USB 2.0
- Attainable Air Vacuum : 200 mmHg
- Free Air Displacement : 5ℓ /min
- Maximum Air Pressure : 0.45 kg/cm²
- Size : 140 × 140 × 111.7 mm
- Weight : 830 g
- Rated Power : 100 ~ 240V, 50/60Hz, 0.5A
- Operating Temperature : 0 ~ 40°C
- Storage Temperature : -10 ~ 70°C